

NOTICE TO CONTRACTORS GENERAL NOTES

- 1. ALL WORK SHALL CONFORM TO THE LATEST BOARD OF PUBLIC WORKS OF THE CITY OF LOS ANGELES ADOPTED EDITION AND SUPPLEMENTS TO THE "GREENBOOK STANDARD SPECIFICATIONS FOR PUBLIC WORKS CONSTRUCTION" AS MODIFIED BY THE CORRESPONDING ISSUE OF THE BROWN BOOK, THE LATEST EDITION OF THE BUREAU OF STREET LIGHTING "SPECIAL SPECIFICATIONS", AND THE SPECIAL PROVISIONS.
2. ELECTROLIERS SHALL BE INSTALLED WITH CENTERLINE 24" BEHIND THE CURB FACE, AND WITH LUMINAIRE ARM ORIENTED OVER THE STREET AND PERPENDICULAR TO ITS CENTER LINE, EXCEPT AS OTHERWISE SPECIFIED HEREON.
3. ELECTROLIERS SPECIFIED TO BE LOCATED INSIDE OF THE CURB RETURN SHALL BE INSTALLED WITH THE CENTER OF THE ELECTROLIER 30 INCHES BEHIND THE CURB FACE MEASURED RADIALLY, AND WITH THE LUMINAIRE ARM ORIENTED OVER THE STREET AND PERPENDICULAR TO THE STREET CENTERLINE.
4. ELECTROLIERS SHALL BE ERRECTED SO THAT THE BASE DOOR IS PERPENDICULAR TO THE CURB AND LOCATED ON THE SIDE OF THE ELECTROLIER AWAY FROM ONCOMING TRAFFIC.
5. ALL EXISTING ELECTROLIERS SPECIFIED TO BE REMOVED OR MODIFIED ON THIS PLAN SHALL BE MAINTAINED IN SERVICE UNTIL THE NEW ELECTROLIER LIGHTING SYSTEM IS PLACED IN SERVICE UNLESS OTHERWISE SPECIFIED HEREON. ALL OTHER ELECTROLIERS ON CIRCUITS AFFECTED BY THIS PLAN SHALL BE MAINTAINED IN SERVICE. CONTRACTOR MAY PROVIDE ALTERNATE LIGHTING IN LIEU OF MAINTAINING EXISTING ELECTROLIER LIGHTS IN SERVICE PROVIDED THAT SUCH ARRANGEMENTS ARE APPROVED BY THE ENGINEER.
6. ALL EQUIPMENT EXISTING HEREON FOR FURNISHING ELECTRICAL SERVICE FOR EACH CIRCUIT SHALL BE INSTALLED AND INSPECTED PRIOR TO ANY OTHER CONSTRUCTION ON THAT CIRCUIT UNLESS OTHERWISE APPROVED BY THE ENGINEER.
7. THE CONTRACTOR SHALL GIVE WRITTEN NOTICE, 72 HOURS IN ADVANCE OF THE REMOVAL OF AN ELECTROLIER, TO ANY PUBLIC AGENCY MAINTAINING EQUIPMENT SUPPORTED BY THAT ELECTROLIER.
8. FOUNDATIONS AND PULLBOXES NOT REMAINING IN SERVICE SHALL BE REMOVED. THE RESULTING EXCAVATION SHALL BE FILLED WITH MATERIAL SIMILAR TO ADJACENT MATERIAL AND SATISFACTORILY COMPACTED WITH A MECHANICAL COMPACTOR IN LAYERS NOT EXCEEDING 12 INCHES. THE SURFACE SHALL BE FINISHED TO MATCH THE ADJACENT SURFACE.
9. THE CONTRACTOR SHALL REQUEST A BURN TEST BY NOTIFYING THE BUREAU OF CONTRACT ADMINISTRATION PROJECT INSPECTOR A MINIMUM OF 7 CALENDAR DAYS IN ADVANCE OF THE DATE ON WHICH A BURN TEST IS DESIRED.
10. CONTRACTOR SHALL GIVE THREE WORKING DAYS NOTICE (PHONE 323-913-4743) PRIOR TO DELIVERY OF ANY EQUIPMENT SPECIFIED TO BE DELIVERED TO THE BUREAU OF STREET LIGHTING YARD AT 4550 SANTA MONICA BLVD. SUCH DELIVERIES SHALL BE BETWEEN 8:30 AM AND 3:00 PM AND SHALL INCLUDE ALL HANDLING AND LOADING FROM THE TRUCK BY THE CONTRACTOR. CONTRACTOR MUST SUPPLY A COPY OF THE STREET LIGHTING SHEETS WITH THE DELIVERY OF MATERIAL.
11. PULLBOXES INSTALLED AT INTERSECTIONS OF LOCAL STREET SHALL BE INSTALLED AT A MINIMUM DISTANCE OF FIVE FEET FROM THE TOP OF THE "X" OF A CASE 1 OR CASE 2 DRIVEWAY OR AT A MINIMUM DISTANCE OF TWO FEET FROM THE B.C. OF A CASE 3 OR CASE 4 DRIVEWAY OR FIVE FEET FROM TRAVELLED WAY OF THE ALLEY.
12. PULLBOXES INSTALLED AT INTERSECTIONS OF LOCAL STREET SHALL BE INSTALLED CLOSER TO THE INTERSECTIONS THAN THE B.C.R. OF AN ASSUMED FUTURE 25' RADIUS CURB RETURN UNLESS OTHERWISE APPROVED BY THE ENGINEER. PULLBOXES INSTALLED AT INTERSECTIONS WHICH INVOLVE ONE OR MORE MAJOR OR SECONDARY STREETS SHALL BE INSTALLED NO CLOSER TO INTERSECTIONS THAN THE B.C.R. OF AN ASSUMED FUTURE 35' RADIUS CURB RETURN UNLESS OTHERWISE APPROVED BY THE ENGINEER.
13. CONDUIT SHALL BE INSTALLED AROUND ALL EXISTING AND/OR PROPOSED CATCH BASINS PER BUREAU OF STREET LIGHTING STANDARD DRAWING NO. L-304-0 UNLESS OTHERWISE SPECIFIED.
14. ALL SCREWS PROVIDED FOR ELECTROLIER STANDARD BASE DOORS AND BASE COVERS SHALL BE CADMIUM PLATED STEEL, 1/4"-20XZC MACHINE SCREWS, WITH PHILLIPS RECESSED ROUND HEADS.
15. UNLESS OTHERWISE SPECIFIED HEREON, LUMINAIRES SHALL PROVIDE A MEDIUM, CUTOFF, TYPE III, LIGHTING DISTRIBUTION PATTERN CONFORMING TO I.E.S. DESIGNATION.
16. CONTRACTOR SHALL BE RESPONSIBLE FOR PRESERVING THE CONDITION OF ALL EXISTING EQUIPMENT TO BE REUSED, MODIFIED OR RETURNED TO THE BUREAU OF STREET LIGHTING YARD.
17. EQUIPMENT INDICATED "DISPOSE" SHALL BECOME THE PROPERTY OF THE CONTRACTOR AND BE DISPOSED OF BY THE CONTRACTOR.
18. STREET LIGHTING CONDUIT SHALL BE INSTALLED BY JACKING OR DRILLING METHODS. INSTALLATION OF CONDUIT BY OPEN TRENCHING IS NOT PERMITTED UNLESS APPROVED BY THE DIRECTOR, BUREAU OF STREET LIGHTING.
19. CONTRACTOR SHALL REPAIR AT HIS COST, THE DAMAGE CAUSED TO EXISTING SPRINKLER SYSTEMS DURING THE CONSTRUCTION OF THIS PROJECT. REPAIRS SHALL BE MADE WITHIN 5 WORKING DAYS AFTER DAMAGE OCCURS.
20. ALL ELECTROLIERS SPECIFIED HEREON SHALL INCLUDE A TYPE 2 PULLBOX, TO BE SUPPLIED AND INSTALLED, UNLESS OTHERWISE SPECIFIED.
21. CONTRACTOR SHALL BE RESPONSIBLE TO ALL EXISTING ELECTROLIERS SPECIFIED TO BE RELOCATED AND MODIFIED ON THIS PLAN. PRIOR TO REINSTALLATION, CONTRACTOR SHALL REPAIR OR REPLACE ALL EXISTING STREET LIGHTING SYSTEMS FOUND TO BE DAMAGED PRIOR TO START OF OR DURING THE CONSTRUCTION OF THIS PROJECT AT NO COST TO THE CITY.

SUPPLEMENTAL NOTES

- 1. CONTRACTOR SHALL LOCATE & PROTECT SUBSTRUCTURE(S) SHOWN HEREON, & SHALL PROVIDE FOR A MINIMUM 12" HORIZONTAL CLEARANCE BETWEEN FOUNDATION & SUBSTRUCTURES. IN THE EVENT A 12" CLEARANCE CANNOT BE ACHIEVED, THE CONTRACTOR SHALL MAKE ARRANGEMENTS FOR RELOCATION OF SUBSTRUCTURES AT NO COST TO THE CITY.
2. IN THE EVENT OF OVERHEAD LINES CONFLICT WITH ELECTROLIERS, CONTRACTOR SHALL MAKE NECESSARY ARRANGEMENTS WITH THE DEPT. OF WATER AND POWER TO RAISE THEIR OVERHEAD FACILITIES IN ORDER TO PROVIDE FOR THE FOLLOWING CLEARANCES WITH EXISTING AND/OR PROPOSED ELECTROLIERS.
LOW VOLTAGE: MINIMUM 3' CLEARANCE BETWEEN OVERHEAD LINES AND ELECTROLIERS
HIGH VOLTAGE: MINIMUM 6' CLEARANCE BETWEEN OVERHEAD LINES AND ELECTROLIERS
3. STREET TREES SHALL NOT BE PLANTED CLOSER THAN 20' FROM EXISTING OR PROPOSED ELECTROLIER, UNLESS OTHERWISE INDICATED.
4. IN THE EVENT OF OVERHEAD COMMUNICATION LINE CONFLICT WITH ELECTROLIERS, CONTRACTOR SHALL MAKE NECESSARY ARRANGEMENTS TO PROVIDE A MINIMUM 12" CLEARANCE.
5. PROPOSED ELECTROLIER FOUNDATIONS AND PULLBOXES SHALL BE INSTALLED OUTSIDE OF ACCESS RAMP AREAS. EXISTING FOUNDATIONS AND PULLBOXES SHALL BE RECONSTRUCTED TO CLEAR ACCESS RAMPS BY A MINIMUM OF 12". EXISTING CONDUIT SHALL BE LOWERED AS NECESSARY PER SEC. 307-2.5 OF THE STANDARD SPECIFICATIONS FOR PUBLIC WORKS CONSTRUCTION.
6. CONDUIT THAT IS TO BE ABANDONED SHALL HAVE WIRES REMOVED. THE CONDUIT SHALL BE REMOVED TO A DEPTH OF AT LEAST 12" BELOW THE SURFACE AND HAVE BOTH ENDS CRIMPED.
7. NOTWITHSTANDING SECTION 16950.2 OF THE SPECIAL SPECIFICATIONS FOR THE CONSTRUCTION STREET LIGHTING SYSTEMS MAGNETIC REGULATING BALLASTS ARE REQUIRED IN ALL COBRA-HEAD LUMINAIRES.
8. ALL #10 AWG WIRES USED FOR MULTIPLE CIRCUIT ELECTROLIER WIRING REFERENCED IN STANDARD DRAWING NO. L-301-1 SHALL BE #10 AWG SOLID COPPER CONDUCTORS.
9. AT LEAST TWO (2) WORKING DAYS PRIOR TO STARTING ANY EXCAVATION, THE CONTRACTOR MUST OBTAIN AN INQUIRY I.D. NUMBER FROM UNDERGROUND SERVICE ALERT BY CALLING (800) 422-4133 OR BY DIALING 811.

SERIES CIRCUIT NOTES

- 1. WARNING: SAFETY CLEARANCE SHALL BE OBTAINED DAILY FROM THE SERVING COMPANY, AND "MEN AT WORK" SIGNS SHALL BE POSTED AT THE SERVICE POINT BEFORE ANY WORK IS DONE OR ANY CONNECTIONS MADE ON AN EXISTING CIRCUIT. SEE SECTIONS 16430 AND 2100 OF SPECIAL SPECIFICATIONS.
2. SERIES CIRCUIT WIRE SHALL BE NO. 8 AWG SOLID COPPER CONDUCTOR, INSULATED WITH 0.110" APPROVED POLYETHYLENE COMPOUND RATED FOR 5,000 VOLT OPERATION.
3. TWO OR MORE TURNS OF SELF-ADHESIVE COLORED TAPE WITH A MINIMUM WIDTH OF 1/2 INCH SHALL BE APPLIED TO EACH CABLE IN ALL SERIES CIRCUITS WHERE WORK IS BEING DONE AND WHERE TWO OR MORE CIRCUITS EXIST IN A COMMON PULLBOX OR POST BASE. THE TAPE SHALL BE APPLIED ON THE CABLE BETWEEN THE SPLICES AND THE CONDUIT, USING ONE COLOR FOR EACH CIRCUIT. THE COLORS WHITE, GRAY, GREEN, AND ORANGE SHALL NOT BE USED.
4. CONTRACTOR SHALL GIVE THE BUREAU OF STREET LIGHTING YARD (PHONE 323-913-4743) TWO WORKING DAYS NOTICE BEFORE ANY WORK IS DONE ON AN EXISTING SERIES CIRCUIT.

CIRCUIT DIAGRAM LEGEND

- NEW WIRE
EXISTING WIRE
DISCONNECT AND REMOVE WIRE
CONNECT WIRE
DISCONNECT WIRE AND TAPE ENDS
NEW LAMP
EXISTING LAMP
REMOVE EXISTING LAMP

MULTIPLE CIRCUIT NOTES

- 1. WARNING: SAFETY CLEARANCE SHALL BE OBTAINED DAILY FROM THE SERVING COMPANY BEFORE DOING ANY WORK OR MAKING ANY CONNECTIONS ON AN EXISTING CIRCUIT. SEE SECTIONS 16430 AND 2100 OF SPECIAL SPECIFICATIONS.
2. MULTIPLE CIRCUIT WIRE SHALL BE NO. 8 AWG STRANDED COPPER CONDUCTOR. TYPE THWN/THHN INSULATION, UL APPROVED FOR 600 VOLT OPERATION UNLESS OTHERWISE SPECIFIED HEREON.
3. THREE WIRES (COLOR CODE: 1-RED, 1-BLACK, 1-WHITE), SHALL BE INSTALLED IN ALL MULTIPLE CIRCUIT CONDUIT UNLESS OTHERWISE PROVIDED FOR HEREON.
4. EVEN NUMBERED ELECTROLIERS SHALL BE CONNECTED TO RED AND WHITE WIRES AND ODD NUMBERED ELECTROLIERS SHALL BE CONNECTED TO BLACK AND WHITE WIRES.
5. ELECTROLIERS SHALL BE WIRED PER TYPICAL MULTIPLE CIRCUIT ELECTROLIER WIRING DETAIL, BUREAU OF STREET LIGHTING STANDARD DRAWING NO. L-301-1, UNLESS OTHERWISE SPECIFIED.
6. MULTIPLE CIRCUITS IN CONDUITS CONTAINING MORE THAN THREE CONDUCTORS SHALL BE APPROPRIATELY IDENTIFIED BY LABELING CONDUCTORS "A", "B", ETC. WITH APPROVED SELF-LAMINATING LETTER TAPE WRAPPED AT LEAST TWICE AROUND THE CONDUCTOR IN EACH PULLBOX. (W.H. BRADY, SPECIAL SELF-LAMINATING WIRE MARKERS OR EQUIVALENT)

LEGEND

- EXISTING ELECTROLIER TO BE RELOCATED
EXISTING UTILITARIAN LIGHTS ON WOODEN POLES WHICH SHALL BE MAINTAINED IN SERVICE UNTIL THE PERMANENT ELECTROLIER LIGHTING SYSTEM IS PLACED IN SERVICE. CONTRACTOR MAY PROVIDE ALTERNATE LIGHTING IN LIEU OF MAINTAINING EXISTING UTILITARIAN LIGHTS IN SERVICE PROVIDED THAT SUCH ARRANGEMENTS ARE APPROVED BY THE ENGINEER.
EXISTING ELECTROLIER TO BE REMOVED. (SEE GENERAL NOTE 8)
NEW ELECTROLIER
EXISTING ELECTROLIER, NOT TO BE REMOVED OR MODIFIED
PULLBOX TYPE 2 UNLESS OTHERWISE SHOWN HEREON. ADDITIONAL PULLBOXES SHALL BE REQUIRED AS SPECIFIED. (SEE DELTA NOS. 25 AND 28)
EXISTING PULLBOX
EXISTING 1" CONDUIT
EXISTING 1-1/2" CONDUIT
EXISTING 2" CONDUIT
NEW 1" CONDUIT
NEW 1-1/2" CONDUIT
NEW 2" CONDUIT
ABANDON CONDUIT (SEE GENERAL NOTE NO.8 & SUPPLEMENTAL NOTE NO.7)
EXISTING ELECTROLIER FOUNDATION
FUTURE ELECTROLIER
PROPOSED CATCH BASIN
ELECTROLIERS TO BE INSTALLED AT THE INTERSECTION. FOR PROP. 218 SECTION USE ONLY. (GENERAL BENEFIT)

NOTICE TO CONTRACTORS MATERIAL LIST

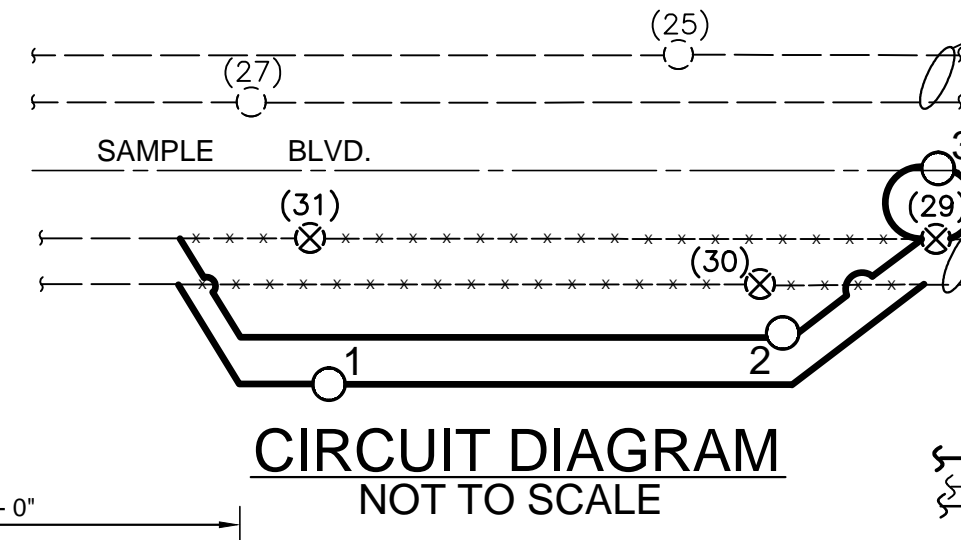
FOLLOWING IS A SUMMARY OF NEW ELECTROLIERS, LUMINAIRES, LAMPS, BALLASTS, FOUNDATIONS, AND OTHER EQUIPMENT WHICH SHALL BE SUPPLIED AND INSTALLED BY THE CONTRACTOR. THIS IS NOT INTENDED TO BE A COMPLETE LIST OF ALL MATERIALS REQUIRED.

Table with columns: SYMBOL, ITEM, QUANTITY, DESCRIPTION, STANDARD PLAN NO., REV. NO.
1 ELECTROLIER 1 CD-851A W/ TYPE 2 PULLBOX B-3655 5
2 LUMINAIRE 4 100W HPS MULT. INT. BALLAST, P.E., CUTOFF *
3 LAMP 4 100W HPS (S-54) *
4 LUMINAIRE 3 250W HPS SERIES EXT. BALLAST, CUTOFF *
5 LAMP 3 250W HPS (S-50) *
6 BALLAST 3 250W HPS SERIES *
7 ELECTROLIER 1 CD-855A W/ TYPE 2 PULLBOX *
8 ELECTROLIER 1 CAL TYPE 19-3-100 W/25' M.A. & TYPE 2 PULLBOX **

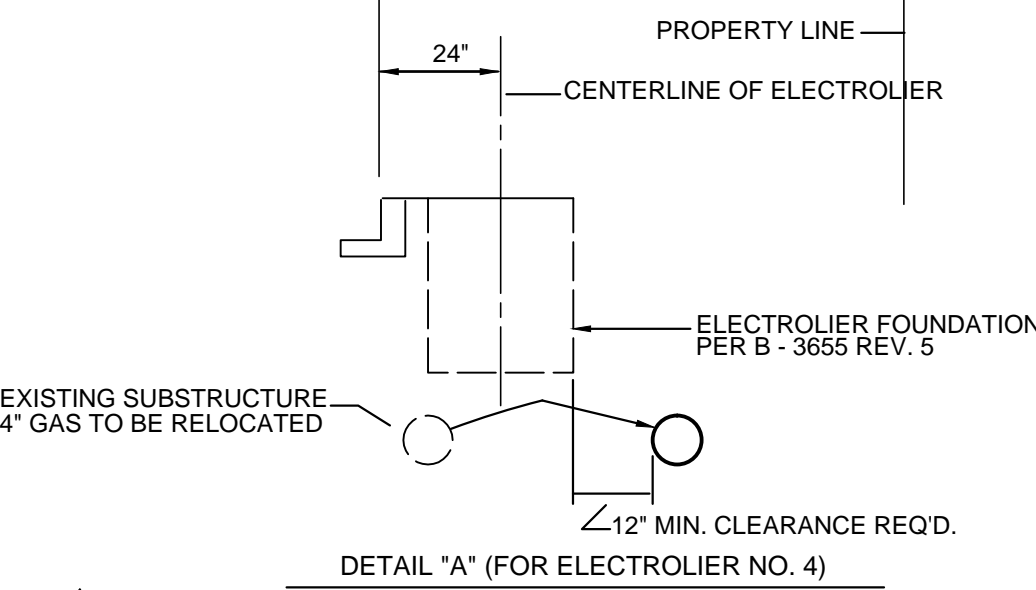
* SET LUMINAIRE TO I.E.S., MEDIUM, CUTOFF, TYPE III LIGHTING DISTRIBUTION.

MATERIAL LIST NOTES

- 1. ALL COBRAHEAD TYPE LUMINAIRES SHALL BE INSTALLED WITHOUT STARTER AND ADHERE TO GENERAL NOTE 16. ALL HPS LAMPS WITHIN COBRAHEAD TYPE LUMINAIRES SHALL BE "EYE IGNITION" PER CORRESPONDING EYE LIGHTING INTERNATIONAL OF NORTH AMERICA CATALOG #'S AS FOLLOWS, OR BSL APPROVED EQUAL:
150W-59707, 200W-59914, 250W-60012, 310W-60050, 400W-60110
2. ALL COBRAHEAD LUMINAIRES REGARDLESS OF WATTAGE ON LOW VOLTAGE, MULTIPLE CIRCUITS SHALL BE EQUIPPED WITH A MONITORING NODE. THE UNIT SHOULD BE PICKED UP AT THE BUREAU'S PLAN COUNTER AT 1149 S. BROADWAY, SUITE #200, LOS ANGELES, CA 90015. THE UNITS WILL BE PROVIDED FOR A NON-REFUNDABLE FEE (APPROXIMATELY \$ 155.00 PER UNIT). THE CONTRACTOR SHALL GIVE SEVEN WORKING DAYS NOTICE (TELEPHONE 213-847-1498) PRIOR TO PICKING UP THE MONITORING UNITS. NODES SHALL BE INSTALLED INTO THE PHOTOELECTRIC CONTROL STANDARD SOCKET PER INSI/NEMA C-136-10 AND SHALL BE ORIENTED IN A NORTHERLY DIRECTION. A SEPARATE P.E. CELL IS NOT REQUIRED FOR LUMINAIRES EQUIPPED WITH A REMOTE MONITORING NODE.
3. INDICATES RELOCATE EXISTING WHILSHIRE SPECIAL ELECTROLIER PER STANDARD PLAN B-541 REV. 20. REMOVE AND DISPOSE OF EXISTING FOUNDATION, PULLBOX, LUMINAIRE, LAMP AND BALLAST. INSTALL NEW FOUNDATION, NEW TYPE 2 PULLBOX AND NEW EQUIPMENT PER MATERIAL LIST. (SEE GENERAL NOTE NO. 22 & DELTA NOTE NO. 25).
4. INDICATE REMOVE AND DISPOSE OF EXISTING LUMINAIRE, LAMP AND BALLAST. INSTALL NEW EQUIPMENT PER MATERIAL LIST.



CIRCUIT DIAGRAM NOT TO SCALE



DETAIL "A" (FOR ELECTROLIER NO. 4)

- 28 SEE DETAIL "A" N.T.S.
29 ELECTROLIER SHALL CONFORM TO AMPER 2-82-26-A OR APPROVED EQUAL. INSTALL FOUNDATION PER STD. PLAN B-3655, REVISION 5.
28a INSTALL TYPE 3 PULLBOX FOR DWP SERVICE. ALL TYPE 3 PULLBOXES SHALL BE OF "COMPOSITE/POLYMER" MATERIAL, W/BOLT-DOWN LID BY ARMORCAST PRODUCT COMPANY, CATALOG NUMBER A6001407APCX12 OR APPROVED EQUAL.
29a CONTRACTOR SHALL LOCATE AND PROTECT STREET LIGHTING PULLBOX PRIOR TO TERMINATING NEW CONDUIT TO PULLBOX. IN THE EVENT THE PULLBOX DOES NOT EXIST OR IS MISSING, THE CONTRACTOR SHALL INTERCEPT EXISTING CONDUIT AND INSTALL NEW TYPE 2 PULLBOX AT NO COST TO THE CITY. (SEE DELTA NOTE NO 25) APPROVAL FOR THE INSTALLATION OF NEW PULLBOX AT NO COST TO THE CITY.
28b INSTALL FUSE HOLDER(S), FUSE(S) AND CONNECT WIRES INSIDE TYPE 2 PULLBOX.
29b INSTALL TYPE 2 PULLBOX. ALL PULLBOXES SPECIFIED SHALL BE OF "COMPOSITE/POLYMER" MATERIAL WITH BOLT-DOWN LID BY ARMORCAST PRODUCT COMPANY, CATALOG NO. A6001859APCX12 OR APPROVED EQUAL.
28c TAPE ENDS OF SPARE WIRE.
29c INSTALL THREE MULTIPLE CIRCUIT WIRES. (COLOR CODE: 1-RED, 1-BLACK, 1-WHITE) REMOVE EXISTING STREET LIGHTING WIRES.
28d MULTIPLE SERVICE LOCATION, INTERCEPT CONDUIT INSTALLED BY OTHERS AND INSTALL TYPE 3 SERVICE PULLBOX. VERIFY EXACT LOCATION OF CONDUIT, PHONE DEPT. OF WATER AND POWER UNDERGROUND ENGINEERING FIVE DAYS PRIOR TO START OF WORK AT THIS LOCATION. (PHONE: 213-367-9966)
29d CONTRACTOR SHALL REQUEST A PERMIT TO PRUNE TREE FROM THE URBAN FORESTRY DIVISION (213) 847-3077, FIVE DAYS PRIOR TO THE INSTALLATION OF ELECTROLIER. ALL TREE WORK SHALL BE PERFORMED TO TREE CARE PROFESSION BEST MANAGEMENT PRACTICES AND TO THE SATISFACTION OF THE URBAN FORESTRY DIVISION.
28e INSTALL APPROVED CONNECTING DEVICES PER DETAIL "B", BUREAU OF STREET LIGHTING STANDARD DRAWING NO. L-301-1.
29e INSTALL APPROVED CONNECTING DEVICES PER DETAIL "A", BUREAU OF STREET LIGHTING STANDARD DRAWING NO. L-301-1.
28f MULTIPLE SERVICE LOCATION, INSTALL 10' OF 2" GALVANIZED CONDUIT SERVICE RISER ON POLE. EXTEND CONDUIT TO THE ALLEY B.C. AND INSTALL TYPE 3 PULLBOX UNLESS OTHERWISE SPECIFIED. INSTALL PULLWIRE.
29f INSTALL FIVE MULTIPLE CIRCUIT WIRES; (COLOR CODE: 2-RED, 2-BLACK, 1-WHITE)
28g INSTALL TWO MULTIPLE CIRCUIT WIRES; (COLOR CODE: 1-BLACK, 1-WHITE)
29g INSTALL TWO MULTIPLE CIRCUIT WIRES; (COLOR CODE: 1-RED, 1-WHITE)
28h INSTALL 1" CONDUIT BEND.
29h INSTALL ADDITIONAL 2" CONDUIT BEND FOR TRAFFIC SIGNAL WIRING.
28i INSTALL ONE APPROVED FUSE HOLDER WITH 30 AMP FUSE BETWEEN EACH SERVICE WIRE (NOT NEUTRAL WIRE) OR SERVICE WIRE CONNECTING DEVICE AND STREET LIGHTING CIRCUIT WIRE. SERVING COMPANY WILL INSTALL SERVICE.
29i JOIN CONDUIT
28j MULTIPLE SERVICE LOCATION, INSTALL TYPE 3 PULLBOX UNLESS OTHERWISE SPECIFIED AND 10' OF 2" GALVANIZED CONDUIT SERVICE RISER ON POLE. INSTALL PULLBOX NO CLOSER THAN 5' AND NO FURTHER THAN 15' FROM THE SERVICE POLE.
29j SERIES SERVICE POLE, INSTALL ONE TERMINAL, CUTOFF BOX STANDARD PLAN B-3724 WITH ONE DISCONNECTING SWITCH FOR EACH CIRCUIT. SERVING COMPANY WILL INSTALL SERVICE.
28k CONSTRUCT CASE 4 DRIVEWAY RETURN PER STANDARD PLAN NO. S-440
29k CONSTRUCT CASE 3 DRIVEWAY RETURN PER STANDARD PLAN NO. S-440.
28l INTERCEPT CONDUIT AND INSTALL PULLBOX.
29l THREAD AND CAP CONDUIT AT END OF IMPROVEMENT.
28m INSTALL CONDUIT ONLY.
29m CONNECT WIRES (PER CIRCUIT DIAGRAM WHERE APPLICABLE).
28n TERMINATE CONDUIT IN STREET LIGHTING PULLBOX.

DELTA NOTES

THE ABOVE NOTES ARE APPLICABLE ONLY WHERE SPECIFIED ON THIS PLAN.

ALL CONSTRUCTION IS PROHIBITED ON MAJOR AND SECONDARY STREET BETWEEN: 6:00 A.M. TO 9:00 A.M. 3:30 P.M. TO 7:00 P.M.

NOTICE TO CITY INSPECTOR/CONTRACTOR NO. 1

THIS PROJECT IS IMPACTED BY PROPOSITION 218. THE STREET LIGHTING EQUIPMENT ON THIS PLAN MAY BE SUBJECT TO CHANGE ("GREEN BOOK" 2006 & 307-13). THE CONTRACTOR SHALL NOT ORDER ANY NEW STREET LIGHTING EQUIPMENT PRIOR TO APPROVAL BY THE BUREAU OF STREET LIGHTING, EQUIPMENT STREET LIGHTING PRIOR TO CONSTRUCTION.

NOTICE TO CITY INSPECTOR/CONTRACTOR NO. 2

THE STREET LIGHTING EQUIPMENT ON THIS PLAN MAY BE SUBJECT TO CHANGE ("GREEN BOOK" 2006 & 307-13). THE CONTRACTOR SHALL NOT ORDER ANY NEW STREET LIGHTING EQUIPMENT PRIOR TO APPROVAL BY THE BUREAU OF STREET LIGHTING, EQUIPMENT STREET LIGHTING PRIOR TO CONSTRUCTION.

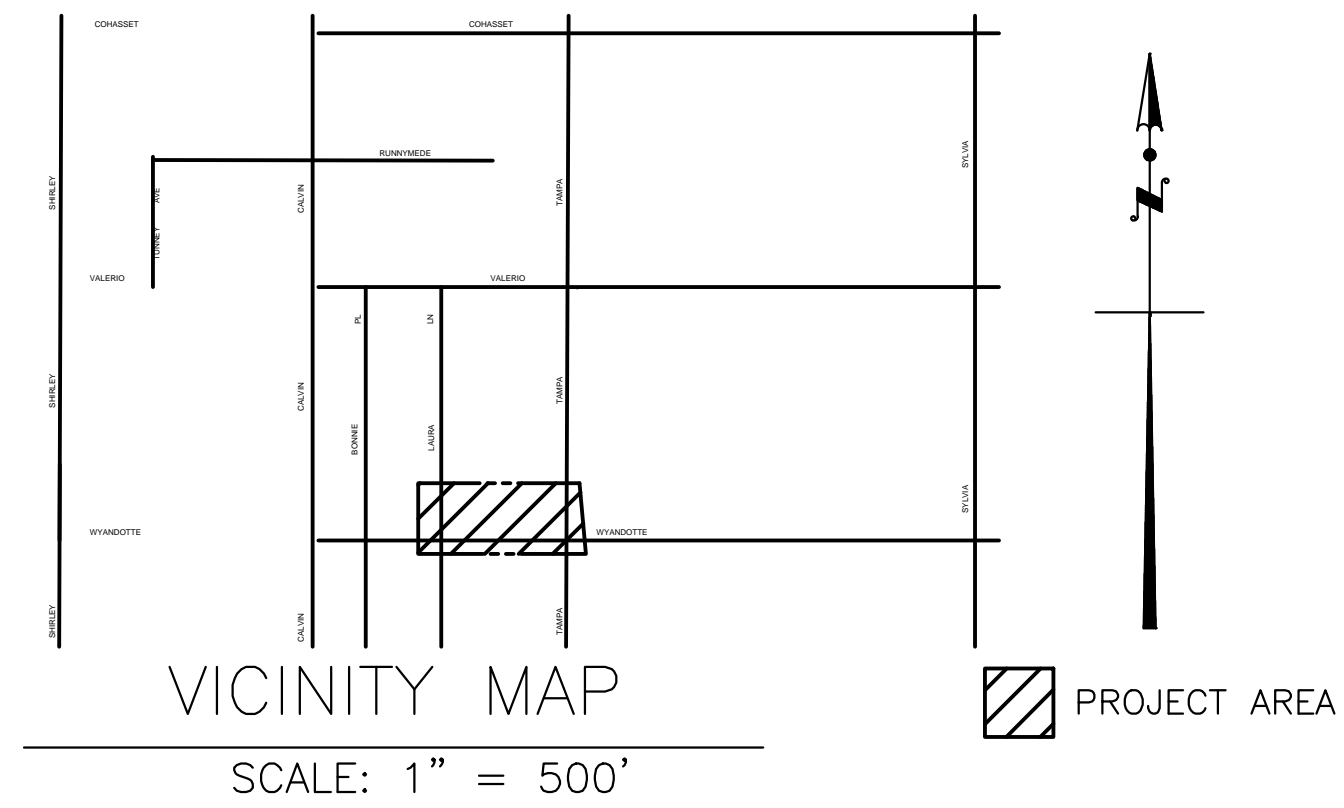
NOTICE TO CITY INSPECTOR/CONTRACTOR NO. 3

STREET LIGHTING CIRCUIT CLEARANCE

- HIGH VOLTAGE CIRCUIT CLEARANCE REQUEST SHALL BE TO THE BUREAU OF STREET LIGHTING AND SHALL BE PERFORMED BY CITY CREWS,
LOW VOLTAGE CIRCUIT CLEARANCE REQUEST SHALL BE PERFORMED BY THE QUALIFIED CONTRACTOR RESPONSIBLE FOR THE CONSTRUCTION OF THE PROJECT.
PRIOR TO CONSTRUCTION THE CONTRACTOR SHALL SUBMIT (2) COPIES OF THE STREET LIGHTING PLAN (24"x36") AND NOTIFY THE CON. AD. INSPECTOR TO SUBMIT "CONSTRUCTION START NOTICE" AND M-21 FORM TO LDWP STREET LIGHTING SUPPORT SECTION (111 N. HOPE ST., RM 910, LOS ANGELES, CA 90012

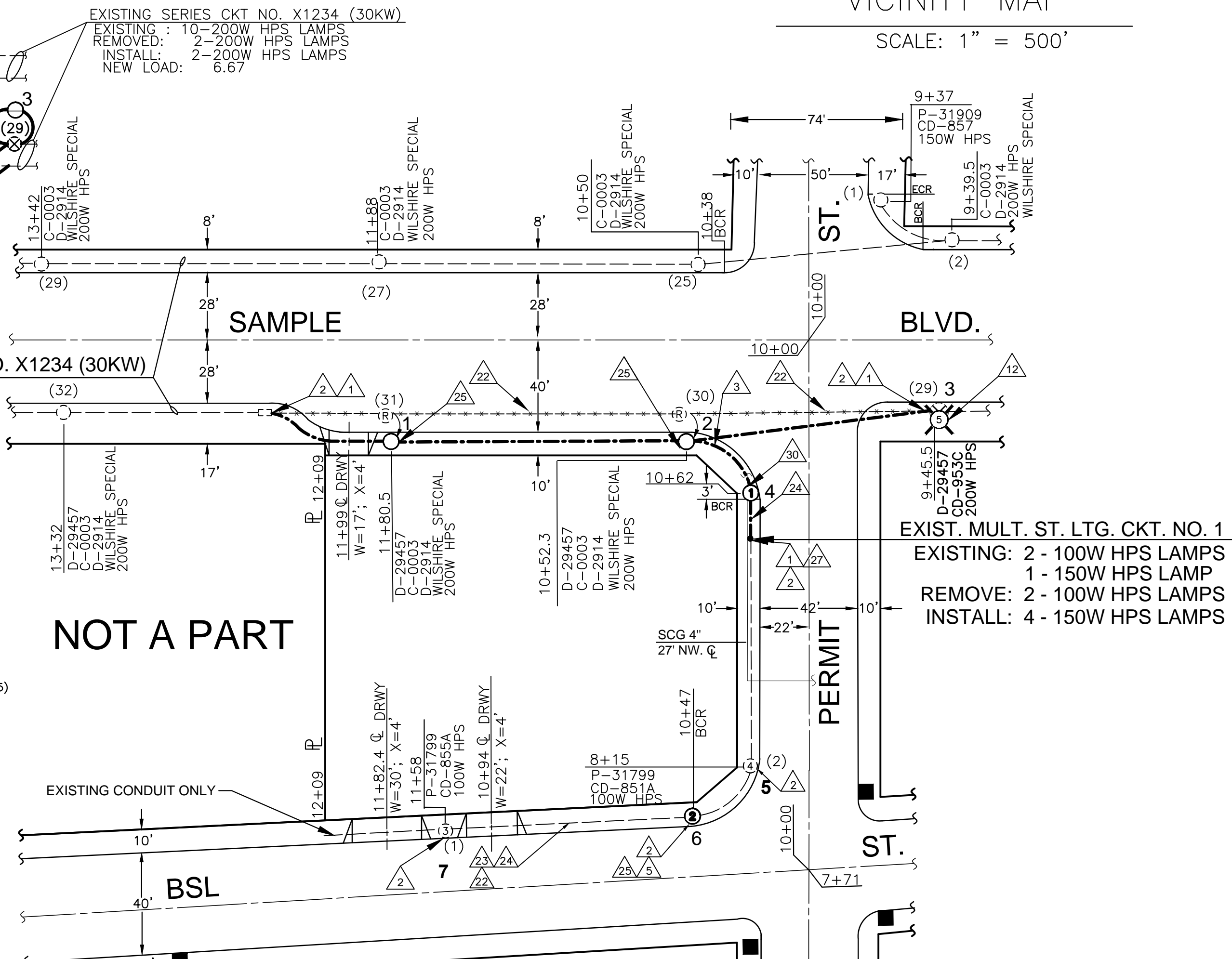
PLAN OF ELECTROLIER LIGHTING SYSTEM

Table with columns: STREET, FROM, TO. Row 1: FILL - OUT, FILL - OUT, FILL - OUT.



VICINITY MAP

SCALE: 1" = 500'



NOT A PART

SAMPLE

EXIST. MULT. ST. LTG. CKT. NO. 1
EXISTING: 2 - 100W HPS LAMPS
1 - 150W HPS LAMP
REMOVE: 2 - 100W HPS LAMPS
INSTALL: 4 - 150W HPS LAMPS

CASE (TRACT, PMLA, VAC, ZA,CPC,DIR, APC, GEN IMP, VOL IMP)
B-PERMIT TITLE
BD - BC -

Approval form for City of Los Angeles, Department of Public Works, Bureau of Street Lighting. Includes fields for Engineer's Seal, Date, and various departmental signatures.